

# How to set up S3 (Suspend to Ram) & S4 (Suspend to Disk)

## I. S3 (Suspend to Ram)

1. Enter motherboard BIOS Go to **Power Management**

Select **S3(STR)** in “ACPI Suspend Type”



2. Click **Start** and select “**Turn off computer**” after entering Windows. The window will list three actions. Select “**Stand By**” to enter S3 mode.

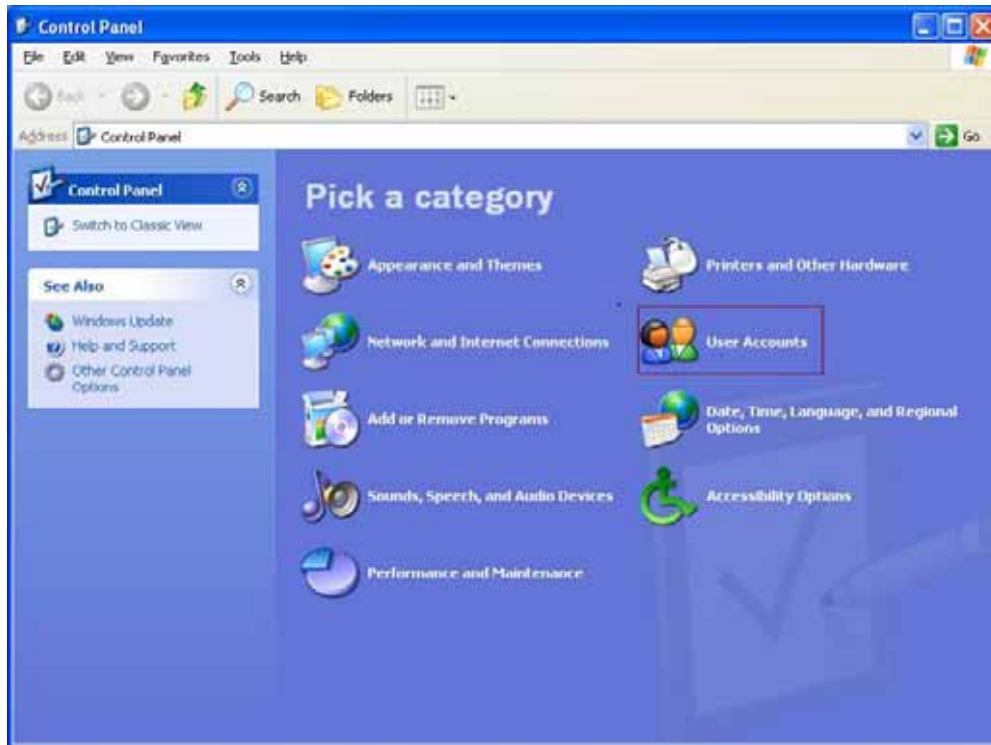


## II. S4 (Suspend to Disk)

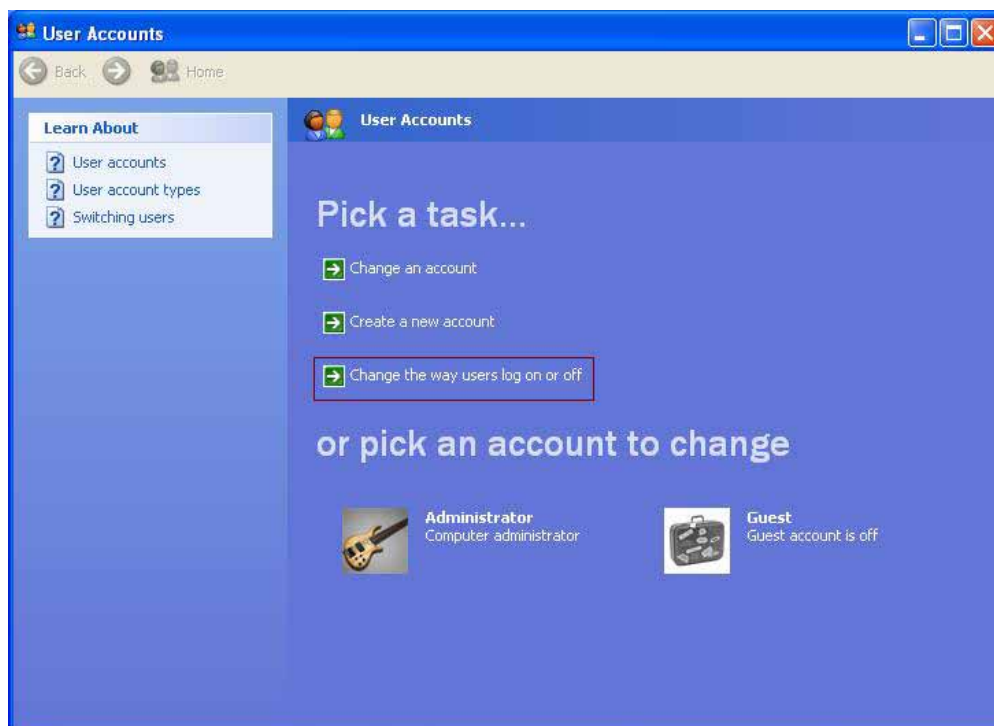
For Windows XP users, please complete step 1 to step 6.

For Windows 2000 users, please start from step 4 to step 6.

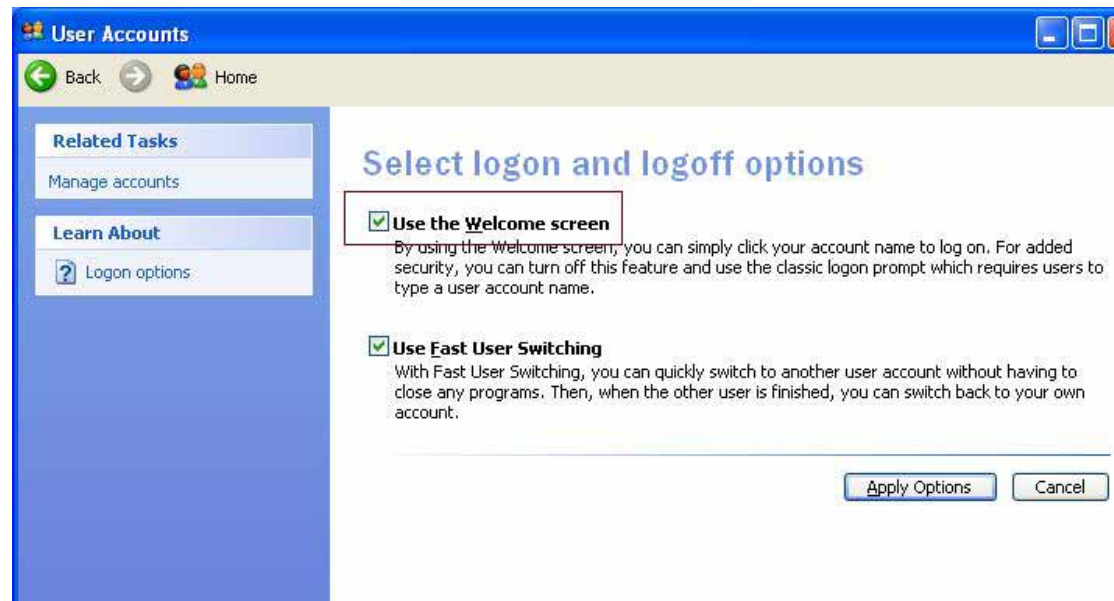
1. Click **Start** and select **Control Panel** from the **Settings** menu. Double click the “**User Accounts**”



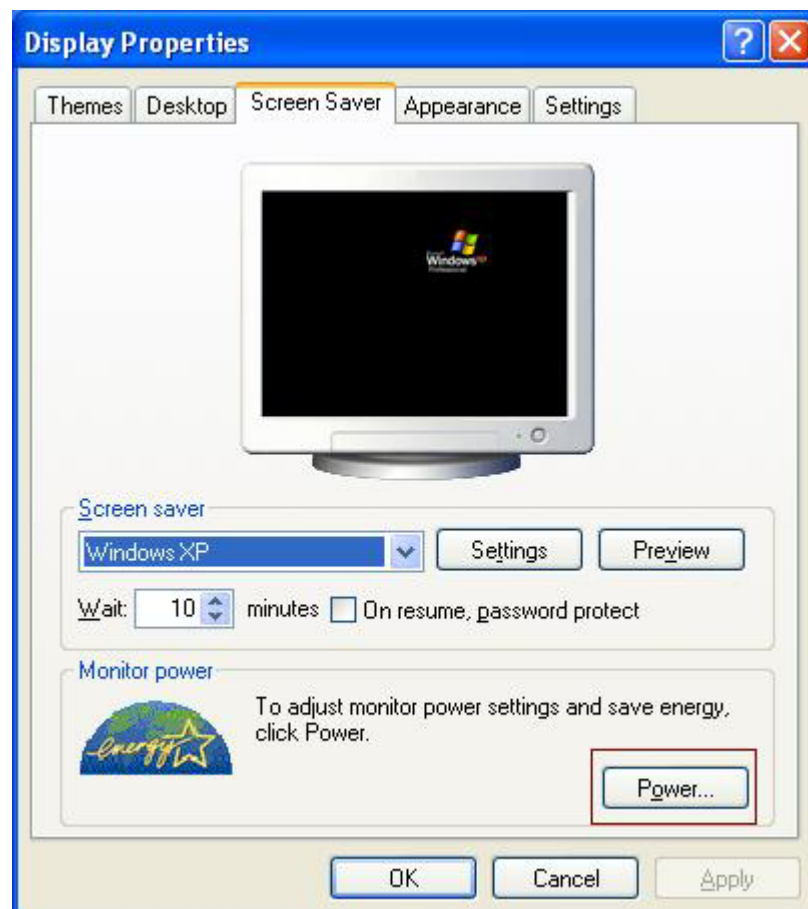
2. Select **Change the way user log on or off** in **User Accounts**.



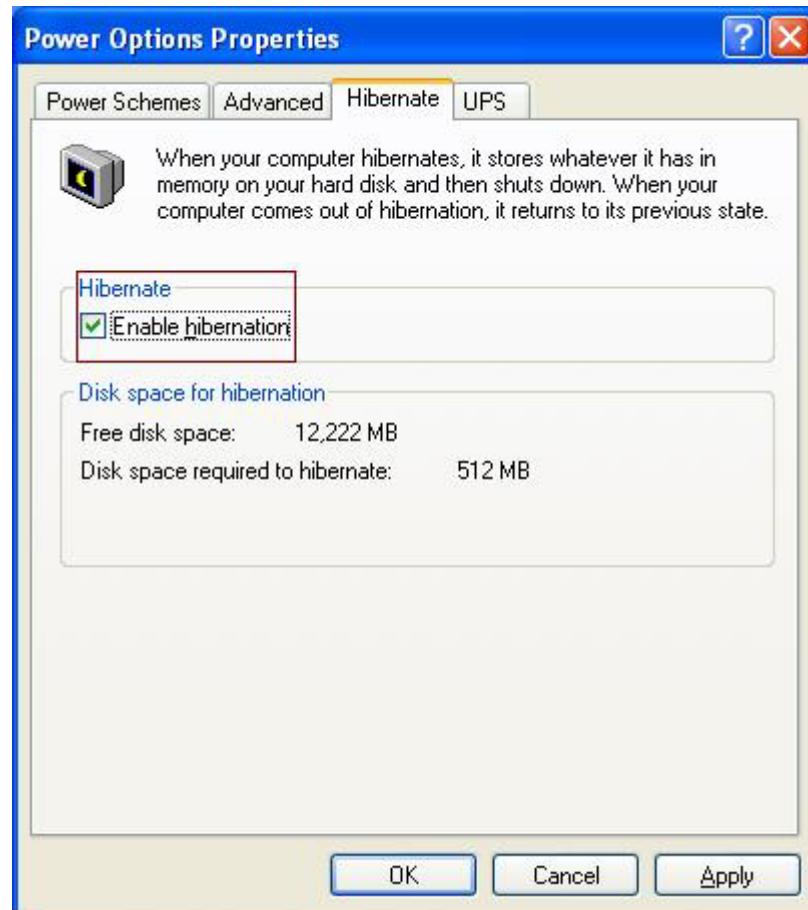
### 3. Un-tick the “Use the Welcome screen”



4. Right click on the desktop and click **Properties** on the popup menu to bring up the **Display Properties** dialog box. Select **Screen Saver** tab and Click **Power** to bring up the submenu.



5. Select **Hibernate** tab and check **Enable Hibernate**.



6. Click **Start**, then select “**Turn off computer**”. **Hibernate** will be added in the list. Select **Hibernate** to enter **S4 (Suspend to Disk)**



**Alternative:** Enable **Hibernate** in **Screen Saver**. Click **Start** and select “**Turn off computer**”. The window will list three actions. Press “**Shift**” key to switch **Stand by** and **Hibernate**. Select **Hibernate** to enter **S4 (Suspend to Disk)**.

