

# The Arcsoft Totalmedia3 configuration for

## WinFast HDTV Cinema

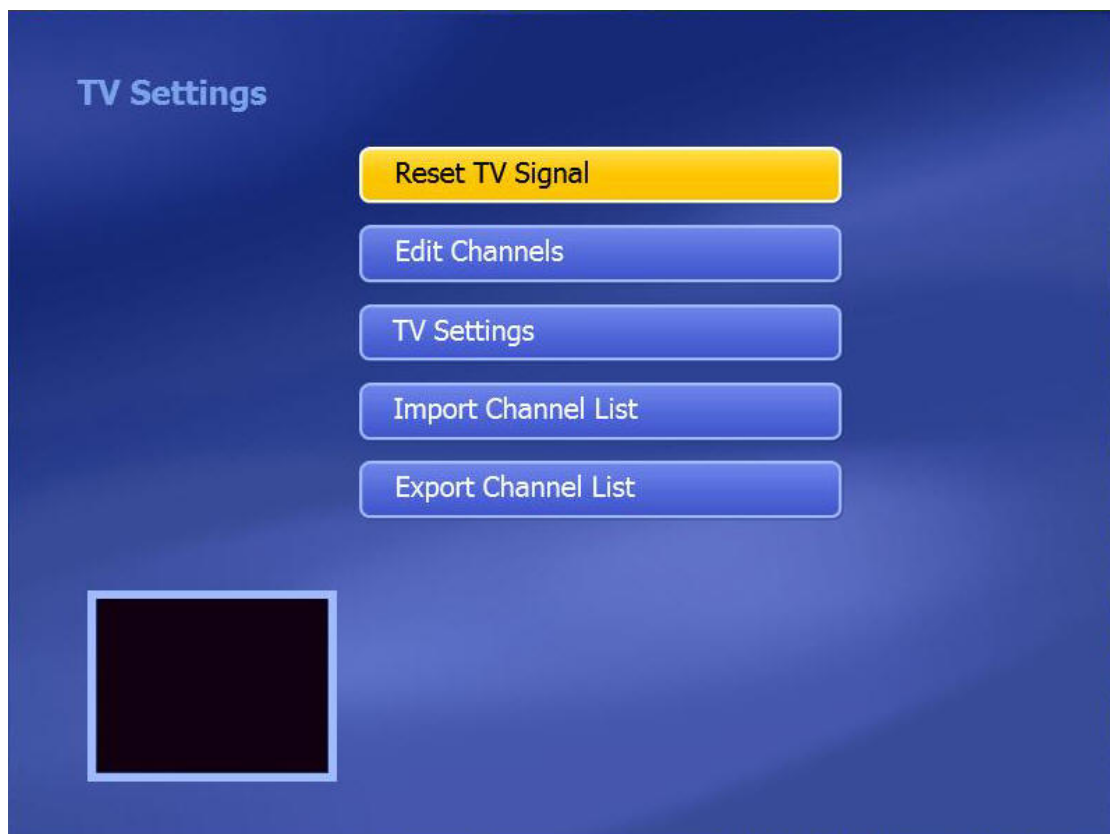
Step 1: Please enter the Setup button.



Step 2: Please select the TV button.



Step 3: Please select "Reset TV Signal" to clear existed configuration if you have had it.



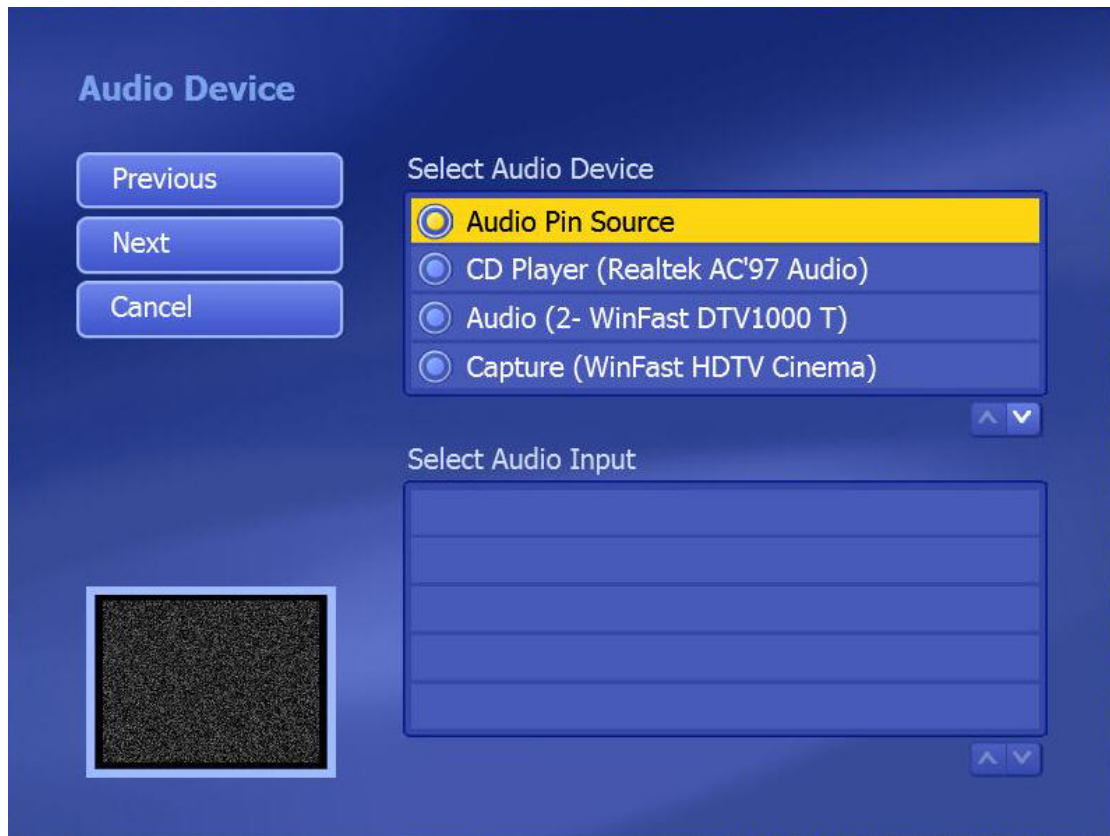
Step 4: Please select the right region and then press the "Next".



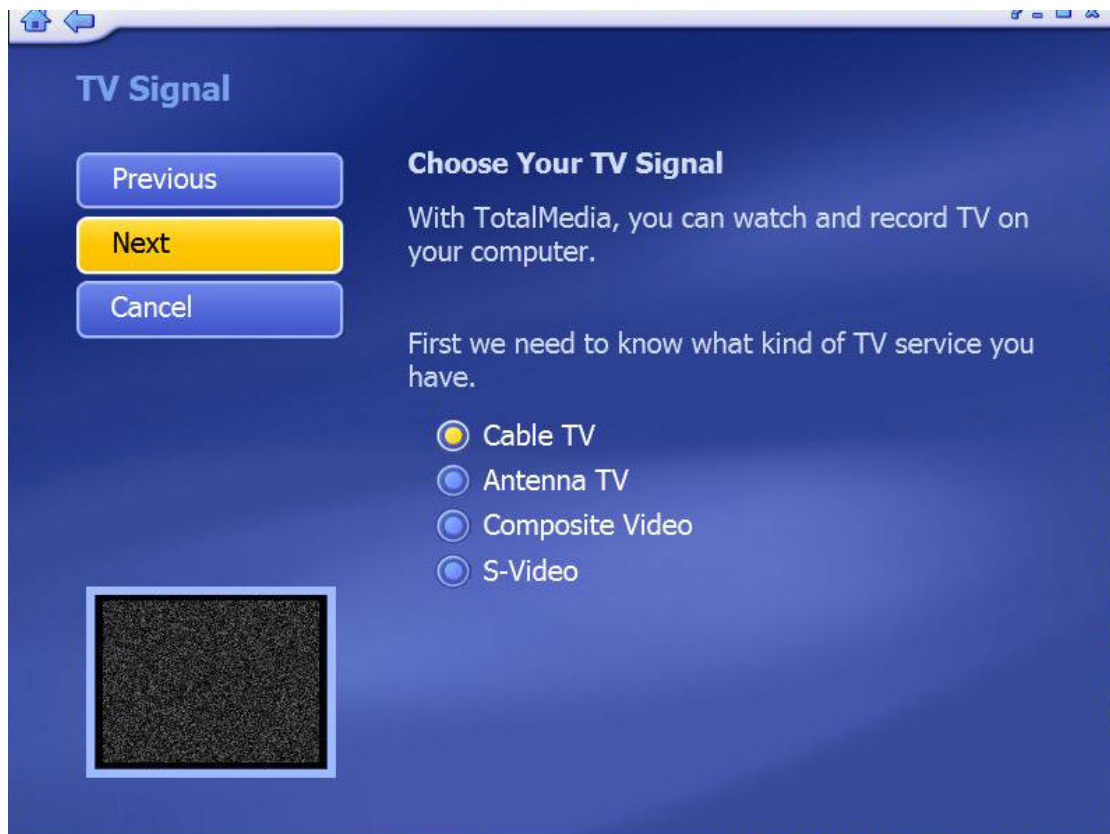
Step 5: Please select "WinFast HDTV Cinema BDA Analog Capture" and then press the "Next".



Step 6: Please select "Audio Pin Source" and then press the "Next".



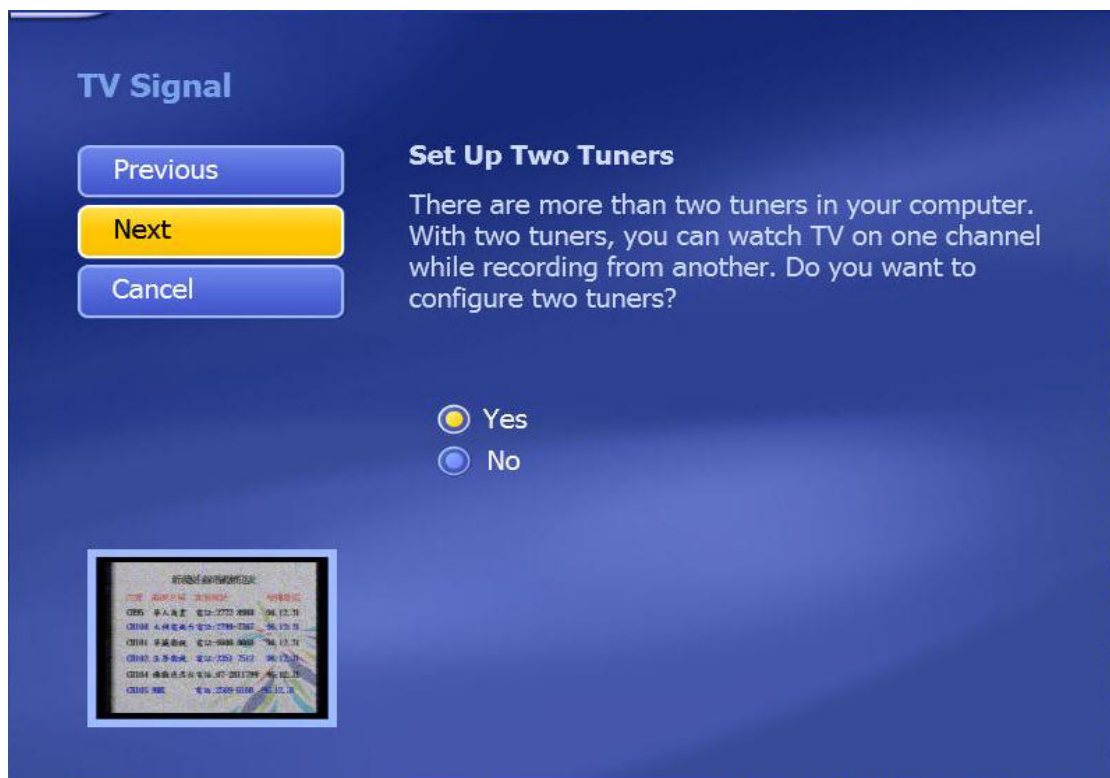
Step 7: Please select the Cable TV and then press the "Next".



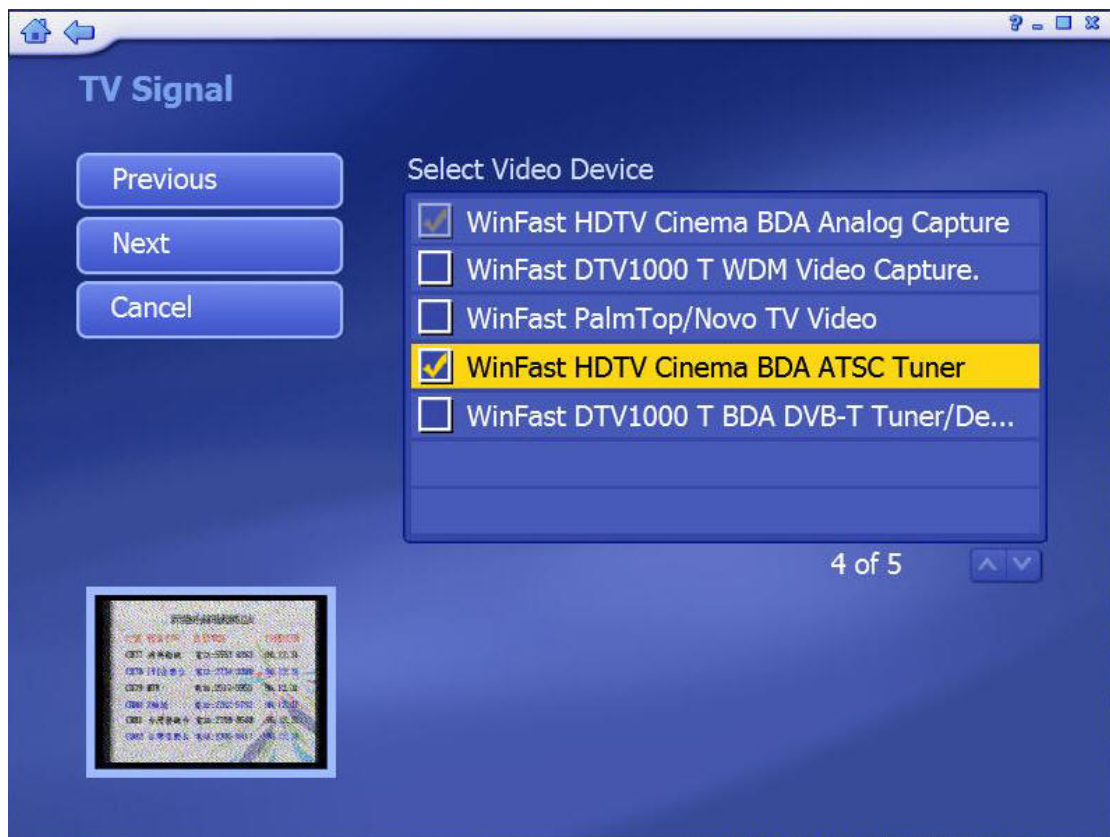
Step 8: Please press the Start to scan channels and then press the "Next".



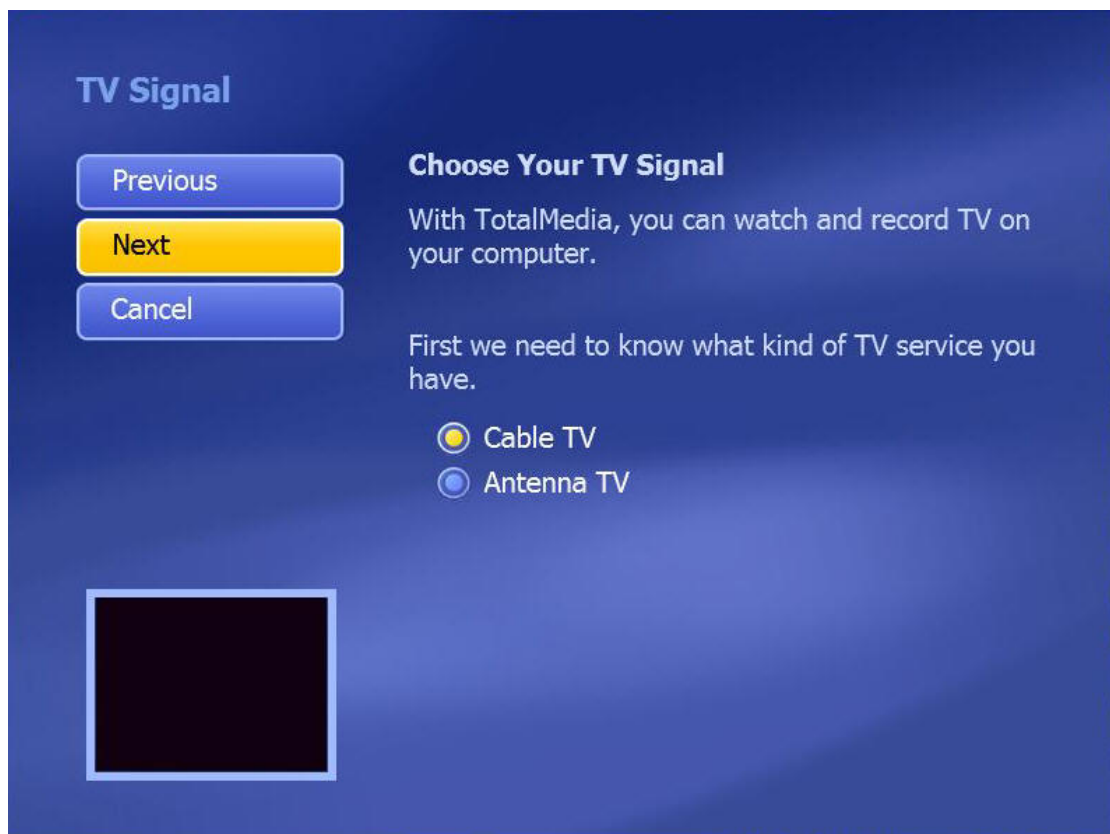
Step 9: Please select "Yes" to set up two tuners for getting the full function of WinFast HDTV Cinema and then press the "Next".



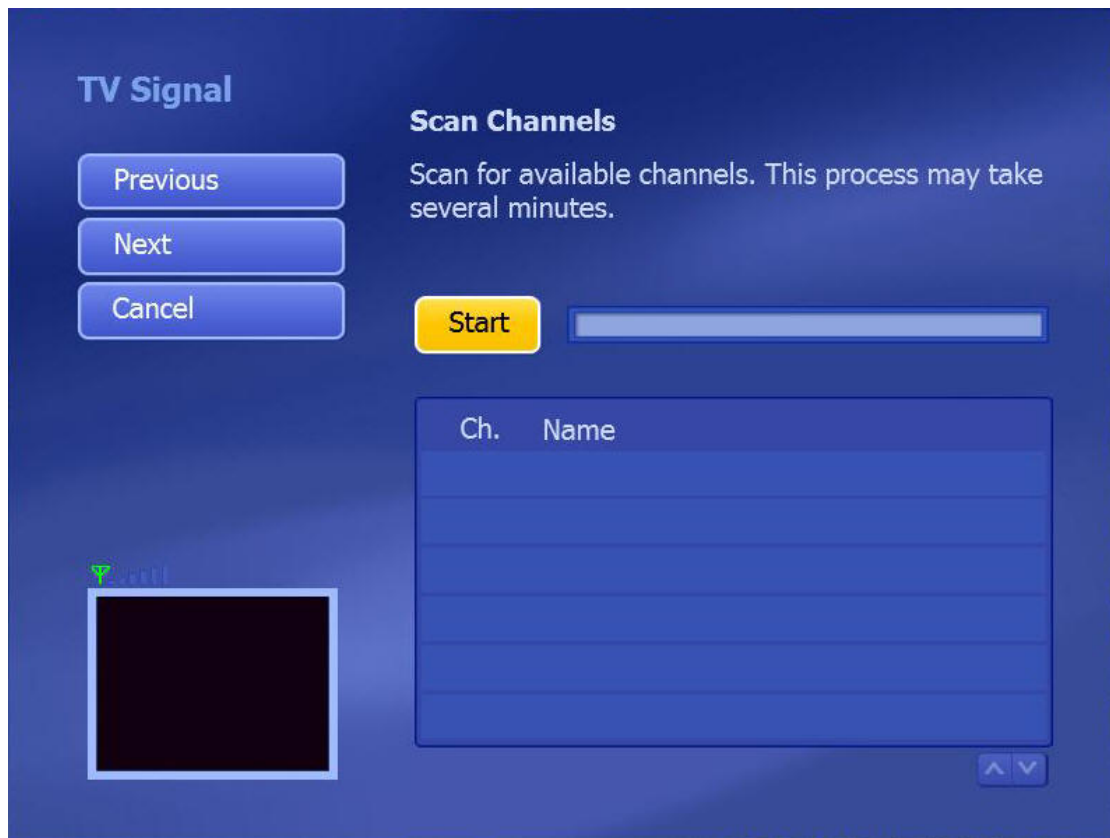
Step 10: Please select "WinFast HDTV Cinema BDA ATSC Tuner" and then press the "Next".



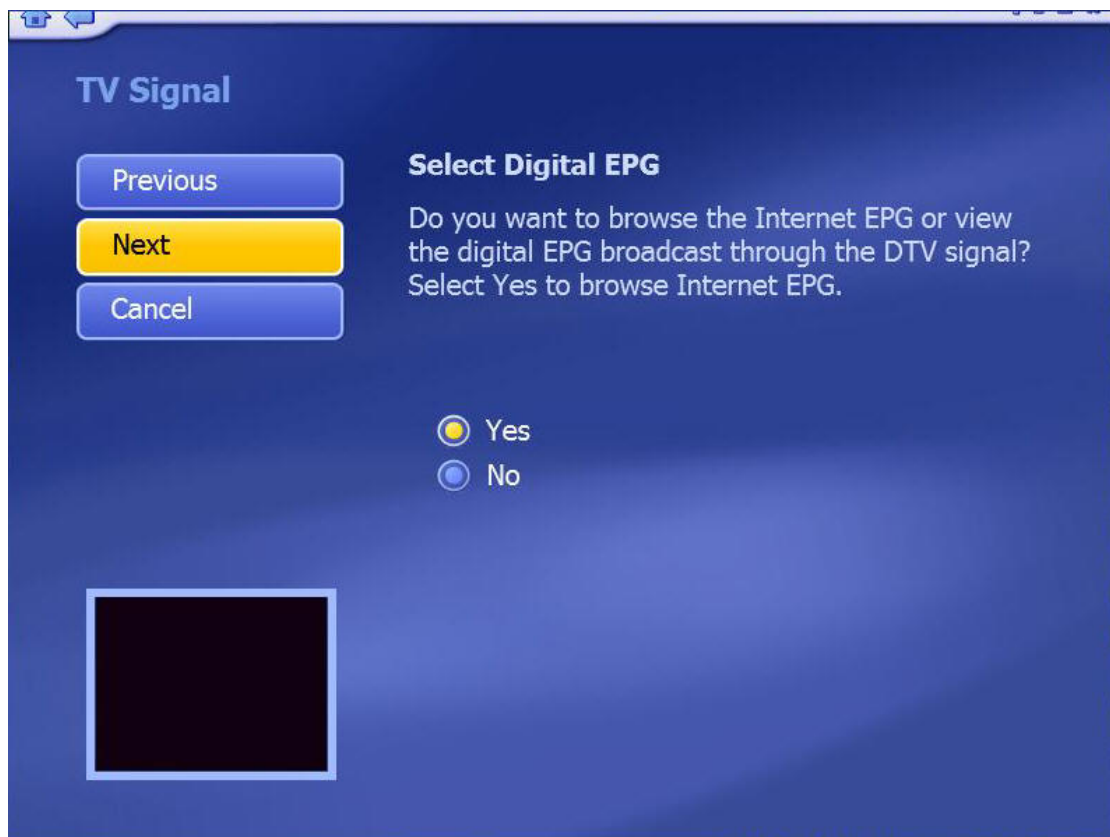
Step 11: Please also select "Cable TV" and then press the "Next".



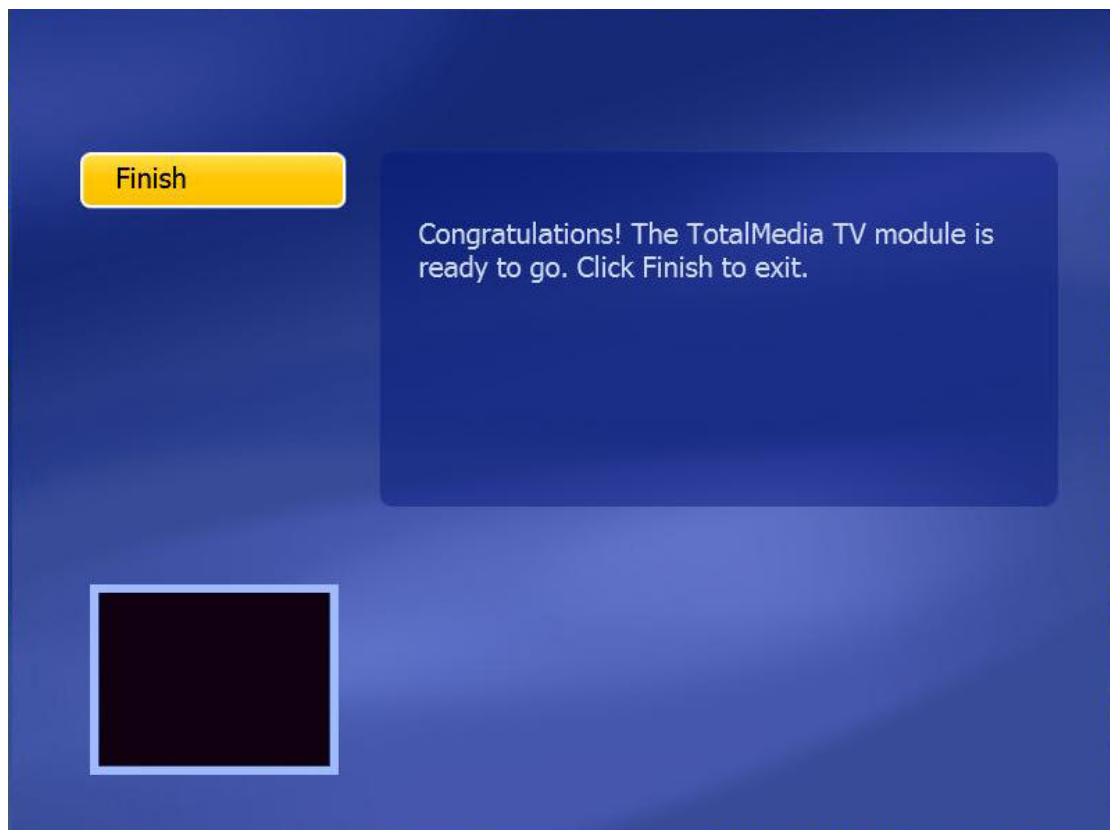
Step 12: Please also press "Start" to scan channels and then press the "Next".



Step 13: Please select "Yes" to browse internet EPG if you would like to.



Step 14: Please press "Finish" and then go back the main menu.



Step 15: Please select "TV" to watch TV.



Step 16: Please change your TV source through TV/AV button from the lower right corner. Then you'll see the TV show with your Arcsoft Totalmedia 3.

