

Question :

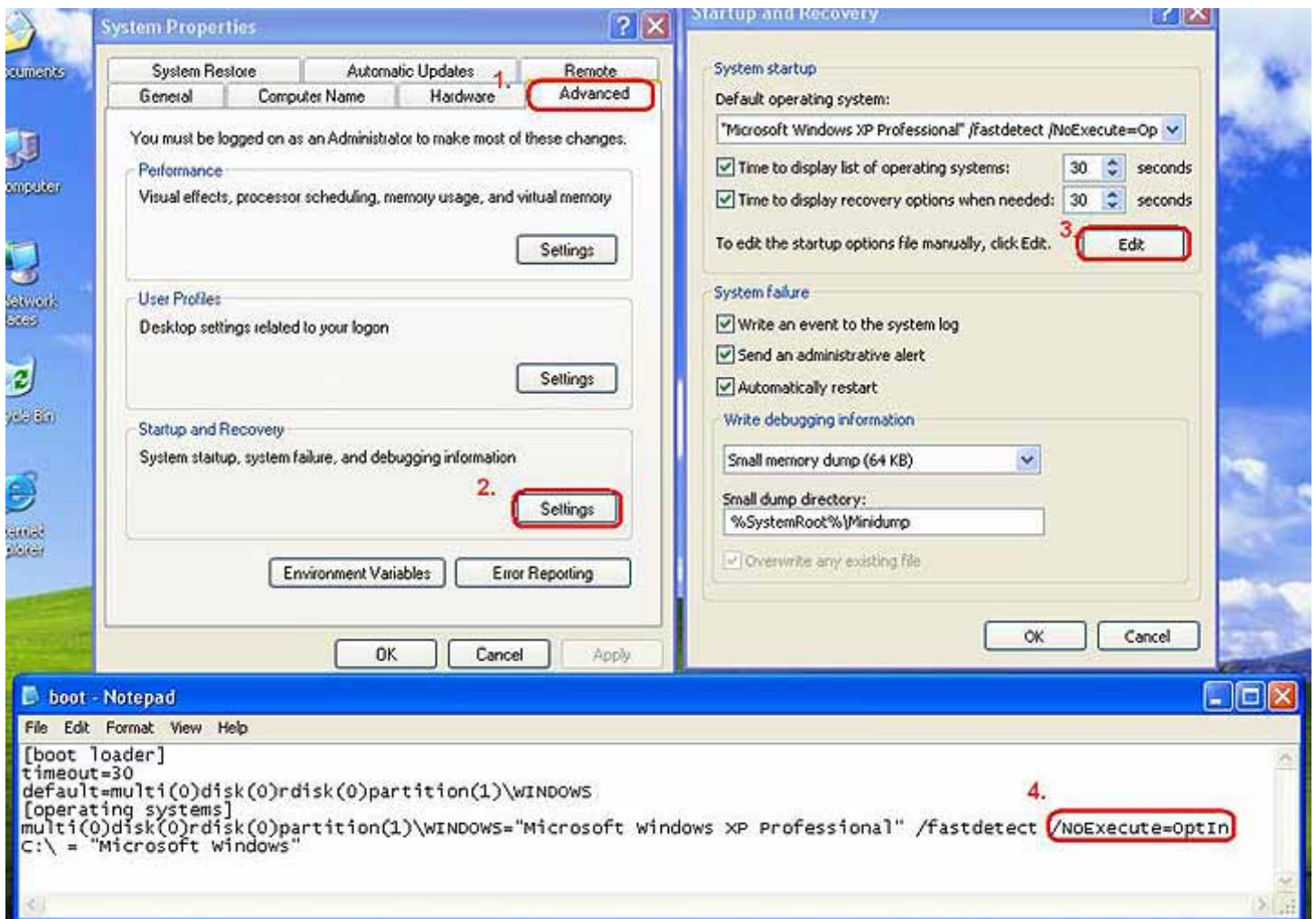
I just got a K8 series MB , and your A6600GT 128MB VGA , every time when I quit the 3D games , the system gave me a blue screen and then restart the system. I already update the VGA driver and MB driver but no luck , what can I do?

Answer :

If your system are WinXP + SP2 , We suggest you to disable DEP function.

Please follow below steps to disable the DEP. (See below picture)

1. First , Select "Advanced" under "System Properties"
2. Choose "Settings" under "Startup and Recovery"
3. Click " Edit " , then you can edit "boot.ini" file.
4. Change "/NoExecute=OptIn" as **"/execute"** (See below red square in step4)
5. Then save the boot.ini file and restart the system.
6. After rebooting , the DEP function will be disable.



Other information please see below link :

<http://support.microsoft.com/kb/875352/en-us>

<http://www.sysinternals.com/ntw2k/info/bootini.shtml>

<http://www.microsoft.com/technet/prodtechnol/winxpro/maintain/sp2mempr.mspx>

- **/NOEXECUTE=OPTIN** Enables DEP for core system images and those specified in the DEP configuration dialog.
- **/NOEXECUTE=OPTOUT** Enables DEP for all images except those specified in the DEP configuration dialog.
- **/NOEXECUTE=ALWAYSON** Enables DEP on all images.
- **/NOEXECUTE=ALWAYSOFF** Disables DEP.

Configuration	Description
OptIn (default configuration)	On systems with processors capable of hardware-enforced DEP, DEP is enabled by default for limited system binaries and applications that "opt-in," With this option, only Windows system binaries are covered by DEP by default.
OptOut	DEP is enabled by default for all processes. Users can manually create a list of specific applications which do not have DEP applied using System in Control Panel. IT Pros and Independent Software Vendors (ISVs) can use the Application Compatibility Toolkit to opt-out one or more applications from DEP protection. System Compatibility Fixes ("shims") for DEP do take effect.
AlwaysOn	This provides full DEP coverage for the entire system. All processes always run with DEP applied. The exceptions list for exempting specific applications from DEP protection is not available. System Compatibility Fixes ("shims") for DEP do not take effect. Applications which have been opted-out using the Application Compatibility Toolkit run with DEP applied.
AlwaysOff	This does not provide any DEP coverage for any part of the system, regardless of hardware DEP support. The processor does not run in PAE mode unless the /PAE option is present in the boot entry.