

Quadro4 400NVS

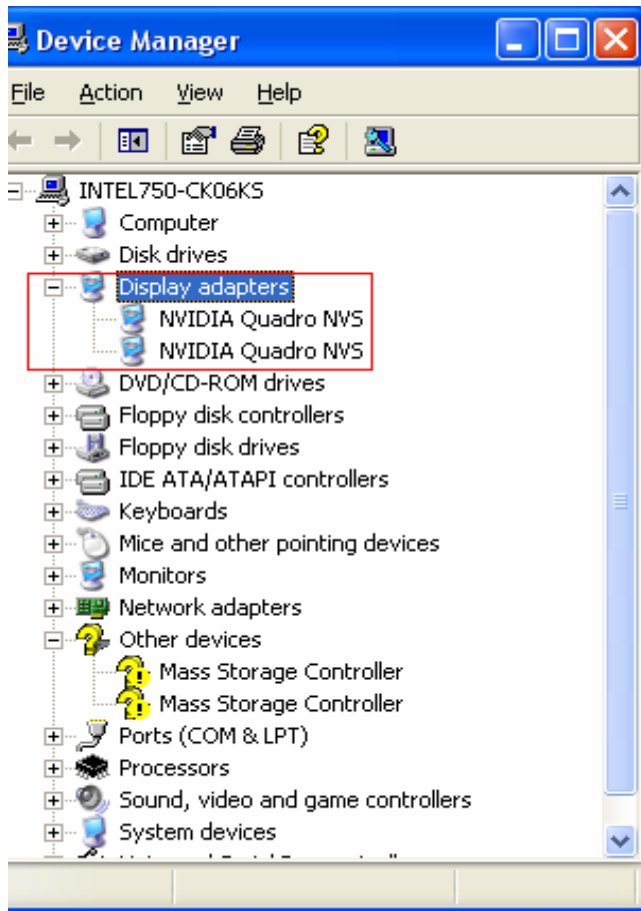
Answer :

Because Quadro NVS 400 have 2 GPUs , each one has 32MB memory , so total have 64MB memory.

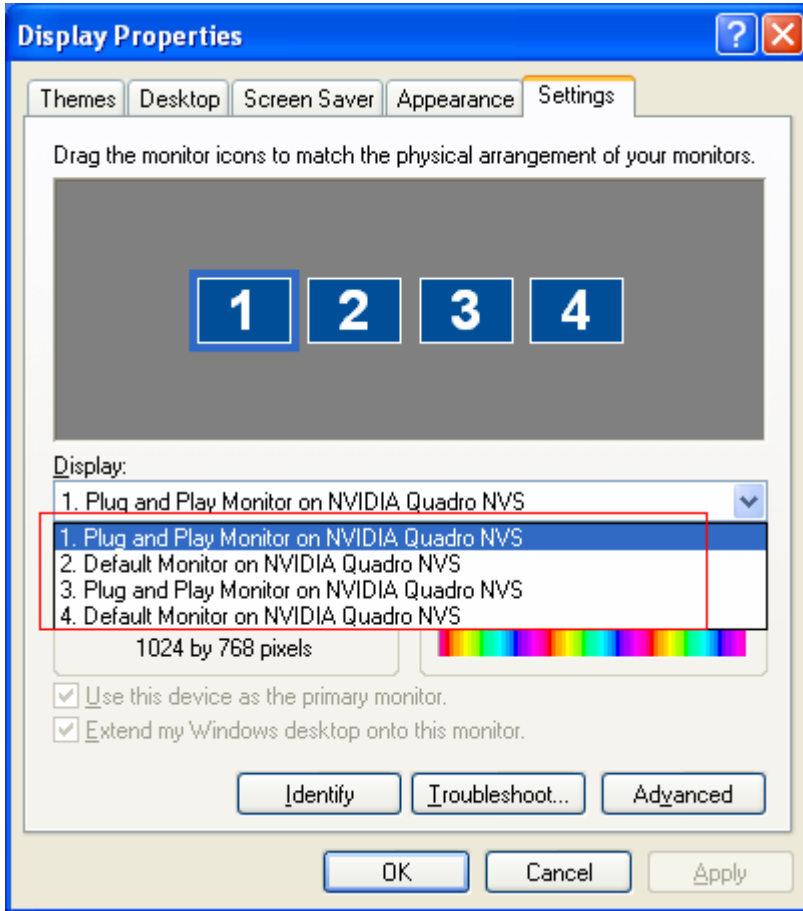
Detail describe as below :

1. Open Device Manager, you will see Display adapters including two devices (device0 and device4) : NVIDIA Quadro NVS.

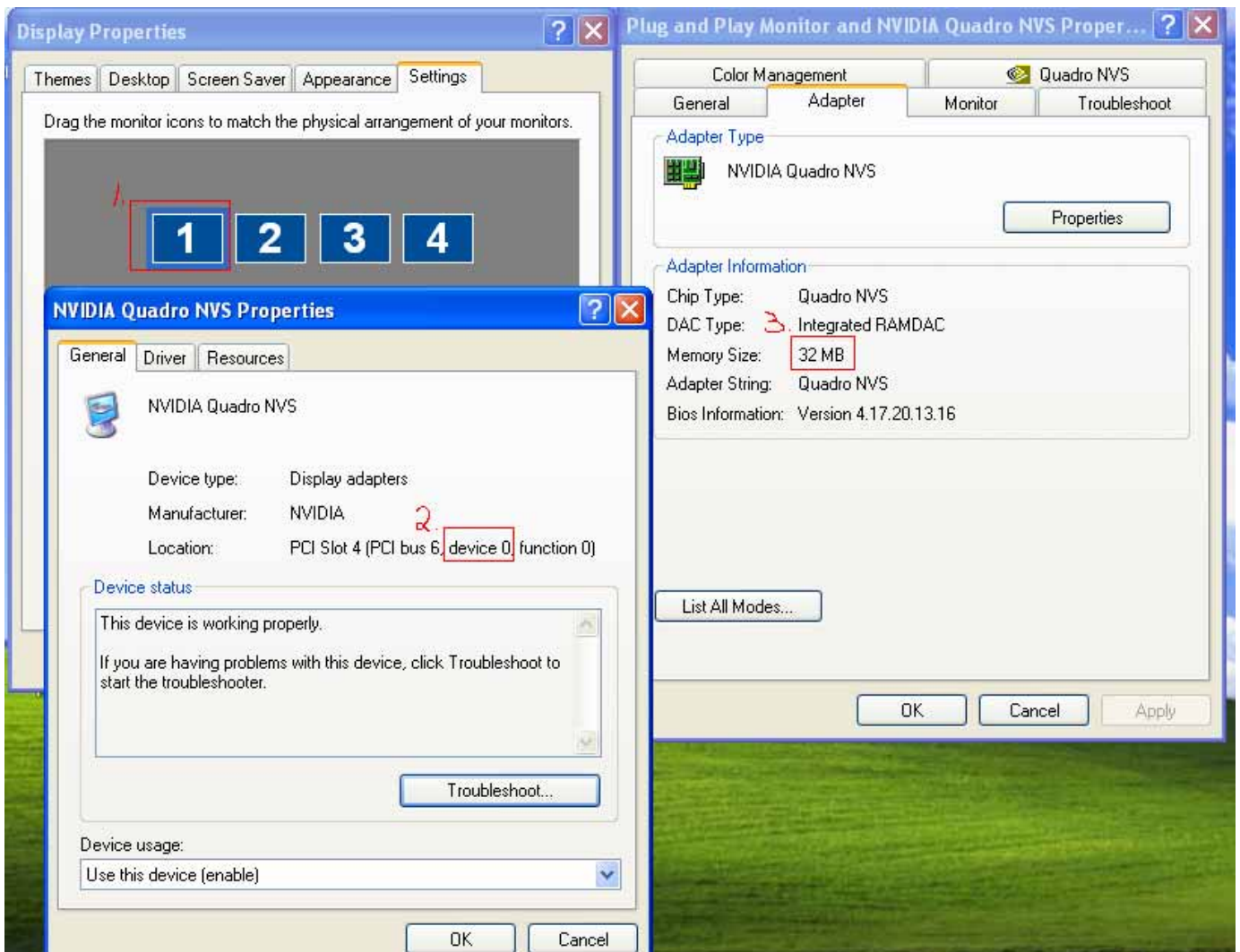
Please see the picture as below:



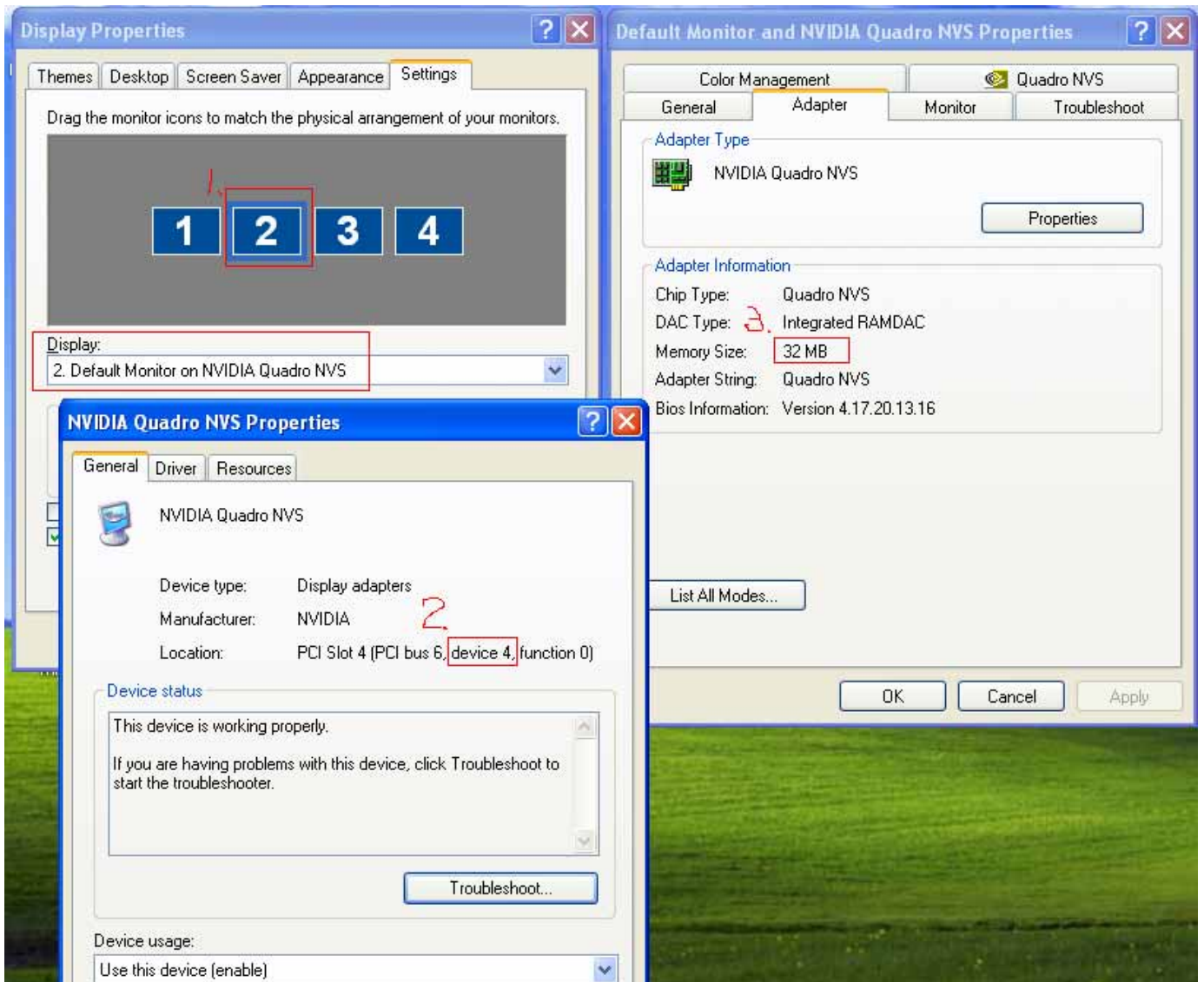
2. Open Display Properties , you will see 4 monitors , each NVIDIA Quadro NVS device controls 2 monitors , please see the picture as below:



3. Move your mouse on Monitor1 and click right key to open it's properties , then select "Adapter" and click "Properties", you will get the picture as below =>
First GPU controls Monitor1 and Monitor3 , and it's location on PCI Slot4(PCI bus6 , **device 0** , function 0) , it memory size is 32MB



4. Move your mouse on Monitor2 and click right key to open it's properties , then select "Adapter" and click "Properties", you will get the picture as below =>
Second GPU controls Monitor2 and Monitor4 , and it's location on PCI Slot4(PCI bus6 , **device 4** , function 0) , it memory size is 32MB



5. So , two GPUs total have 32MB+32MB = 64MB memory.
6. Why we just see 32MB shown under BIOS mode?
This is because it just used one GPU(device 0),and each GPU control 32MB memory.