

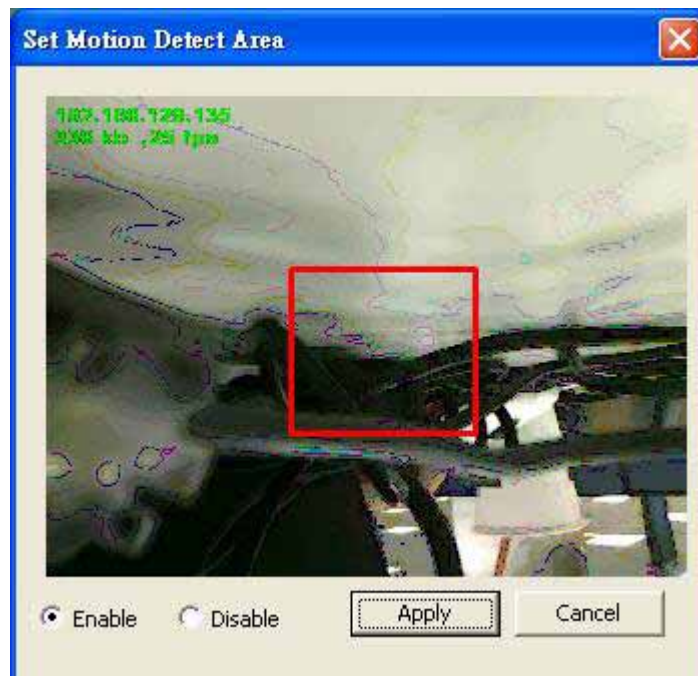
## Motion Detection

Category : SMC / Operation / General

Q: How do I configure the Motion Detection of IPCAM ?

Configure motion detection from "Advanced Setting" → "Motion Detection" → "Area 1"

Use the mouse to make the selection of motion detection block and apply the "Enable" radio button.



The rest of the setting determines what actions will be taken by SMC(snapshot, record) or IPCam device(send snapshot by email or FTP, trigger DO) when motion alarm triggered.

Area of Detection

<b>Area1</b>	<b>Area2</b>	<b>Area3</b>
--------------	--------------	--------------

**SMTP Setting**      **FTP Setting**

Netcam action       invoke DO  
 send email  
 send ftp

Client action  
 Snapshot       Record

Number of Snapshot      6 pictures ▼

Event Rec. duration      2 minutes ▼

**Clear Setting**      **Apply Setting**

- ✓ **Sensitivity** (%): Pixelized detection from the frame ; the higher the higher sensitivity of Motion Detect.]
- ✓ **Object size** (%) : For detecting the size of the moving object . The bigger the lower sensitivity of Motion Detect .
- ✓ **Frame Interval** : For detect the motion detect , pick the
- ✓ **Alarm Duration** : Time interval of IP Camera send the 2nd alarm by Motion Detect .
- ✓ **Area of Detection** : Define the area ; 3 areas , each needs to be defined separately ☆ .
- ✓ **SMTP Setting** : Configure the SMTP for sending out the captured image ☆.
- ✓ **FTP setting** :Configure the FTP for transferring the captured images ☆.
- ✓ **NetCam Action** : Invoke DO/send email/send ftp
- ✓ **Client Action** : Snapshot / Recording Setting
- ✓ **Number of Snapshot** : While enable the Client Action with Snapshot , set the Number of Snapshot to define the alarm pictures amount .
- ✓ **Event Rec. duration** : After the time of duration set , the alarm will be cleared and wait for another trigger point .