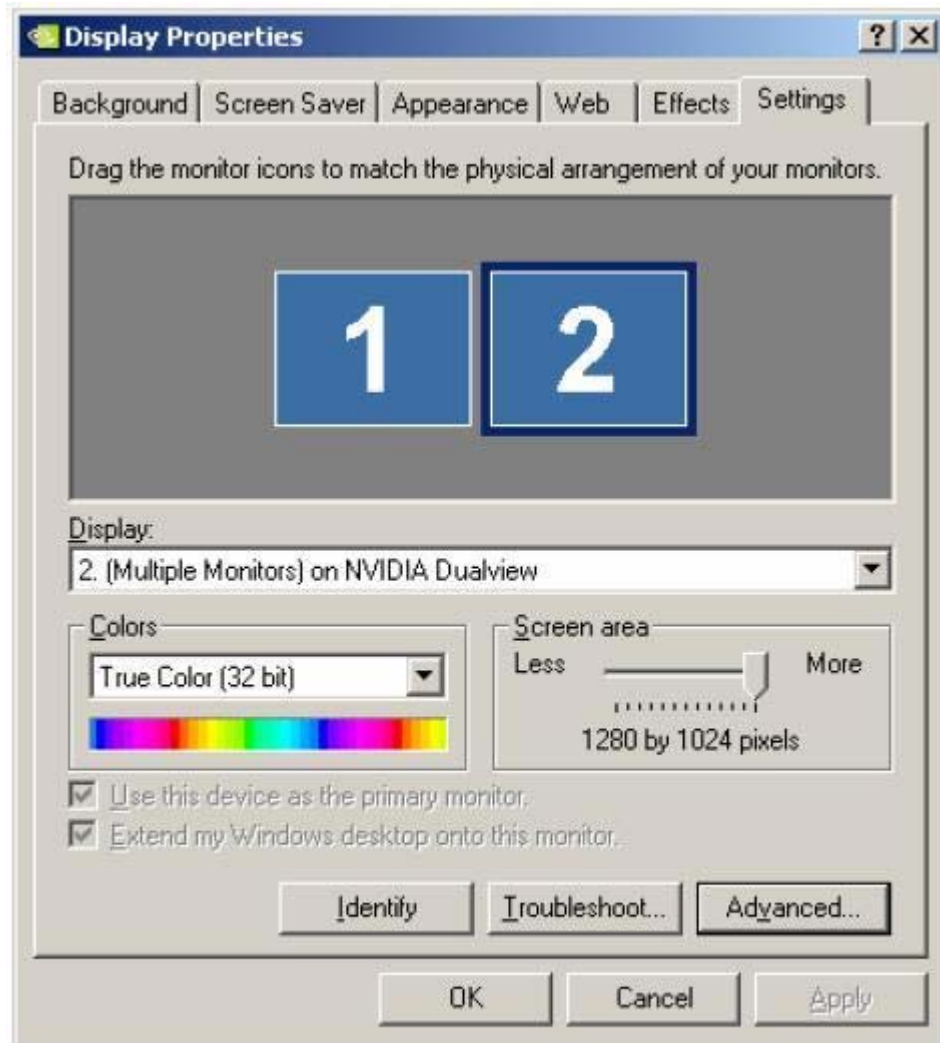


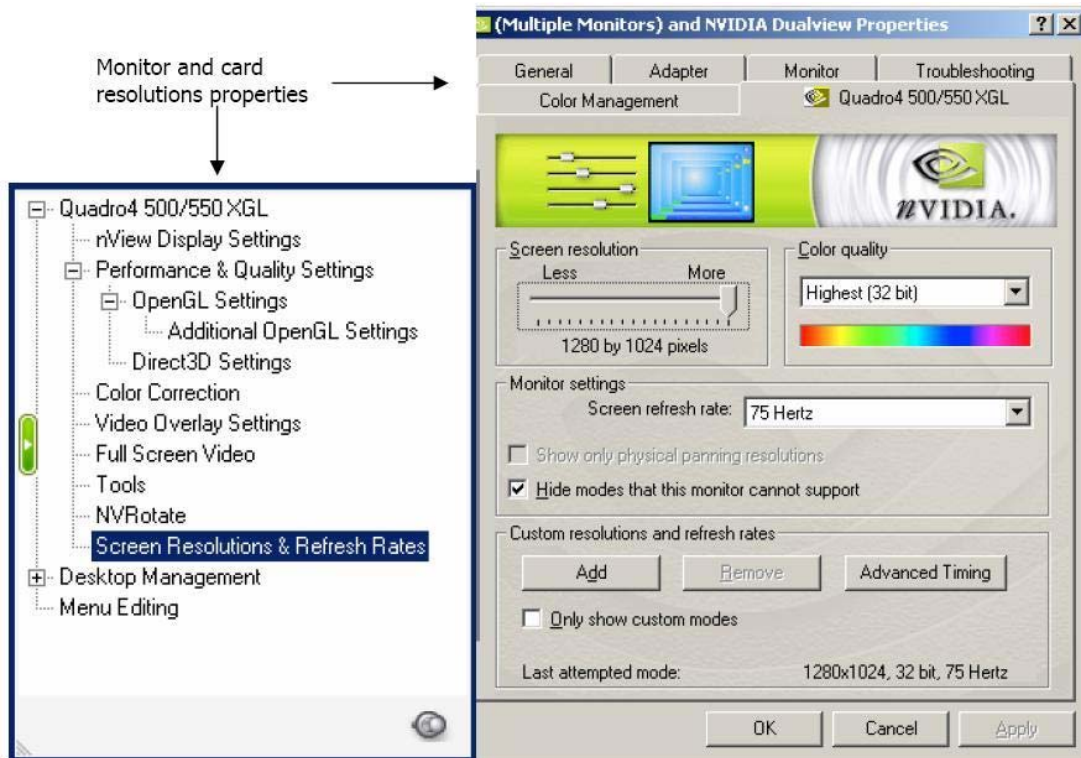
## Leadtek WinFast Graphics Card Resolution Tables

These tables contain the resolutions capable of being supported by the Leadtek WinFast graphics cards. The specific model numbers are given in the title of each table.

The resolutions represent modes that are made available based on your specific hardware and monitor combinations. Additional modes not listed may be available for selection in the display control panel. For example, current monitors have the ability to expose what resolutions are supported to the attached graphics card. From this information, a list of valid resolutions are generated and used by the operating system. Leadtek products will automatically enable these resolutions as long as they fall within the hardware capabilities.

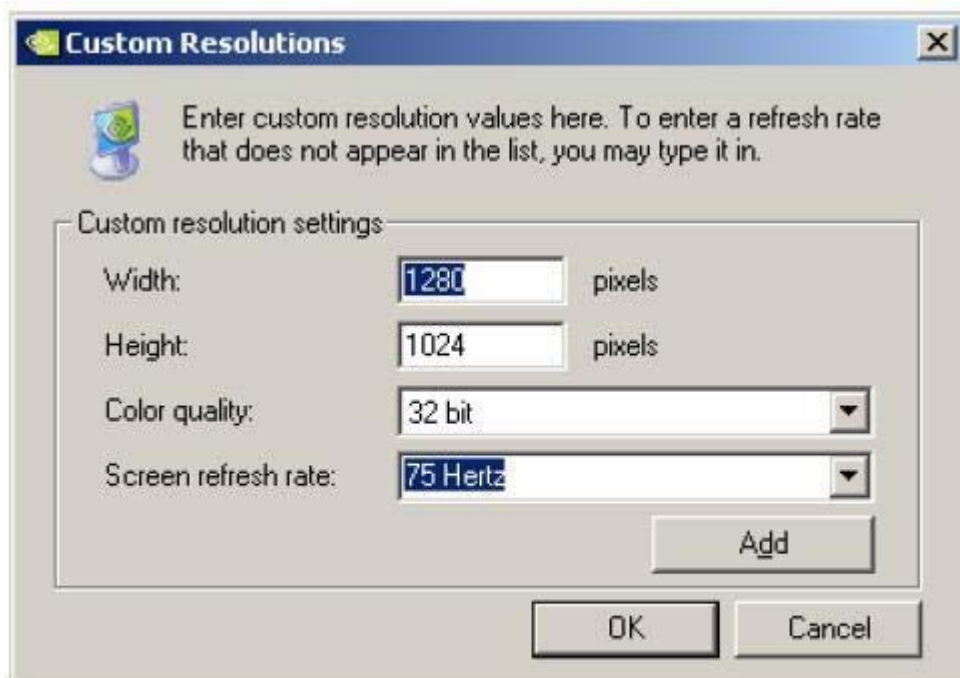


Display Control Panel



Display Control Panel

In special cases, more resolutions can be custom added by the user and made available, as long as they fall within the hardware capabilities.



Custom Resolutions

## Dual-Link DVI Display Resolutions

This table lists the dual-link DVI display resolutions for the follow Leadtek WinFast graphics cards.

### ◆ Dual dual-link DVI

- |                           |                           |
|---------------------------|---------------------------|
| ✓ GTX Series              | ✓ PX8600 GTS Series       |
| ✓ PX9800 GX2 Series       | ✓ PX8600 GT (DDR3) Series |
| ✓ PX9800 GTX Series       | ✓ PX8500 GT Extreme       |
| ✓ PX9800 GT Series        | ✓ PX7950 GX2              |
| ✓ PX8800 ULTRA Series     | ✓ PX7900 GTX              |
| ✓ PX8800 GTX Series       | ✓ PX7950 GT Series        |
| ✓ PX8800 GTS Series       | ✓ PX7900 GT Series        |
| ✓ PX8800 GT Series        | ✓ PX7900 GS Series        |
| ✓ PX9600 GT Series        | ✓ PX7600 GT Series        |
| ✓ PX9500 GT (DDR3) Series |                           |

### ◆ Single dual-link DVI

- |                           |                    |
|---------------------------|--------------------|
| ✓ PX9500 GT (DDR2) Series | ✓ A7600 GT         |
| ✓ PX9400 GT (DDR2) Series | ✓ PX7600 GS Series |
| ✓ PX8600 GT (DDR2) Series | ✓ A7600 GS         |
| ✓ PX8500 GT Series        | ✓ PX7300 GT Series |
| ✓ PX8400 GS Extreme       | ✓ A7300 GT         |
| ✓ PX8400 GS Silent        |                    |

**Note:** Single dual-link DVI has only one output capable of the resolution rates, whereas dual dual-link DVI has two identical outputs both capable of the resolution rates.

Resolution	Refresh Rate (Hz) - Analog Support	Refresh Rate (Hz) - Digital Support
2560 x 1600	-	60
2048 x 1536	75	60
1920 x 1440	85	60
1920 x 1200	85	60
1920 x 1080	85	60
1680 x 1050	60	60
1600 x 1200	100	60
1600 x 1024	100	60
1600 x 900	120	60
1440 x 900	-	60
1400 x 1050	-	60
1360 x 768	150	60
1280 x 1024	100	60
1280 x 960	120	60
1280 x 800	150	60
1280 x 768	150	60
1280 x 720	150	60
1152 x 864	120	60
1088 x 612	150	-
1024 x 768	150	60
960 x 600	150	-
848 x 480	-	60
800 x 600	150	60
720 x 576	-	60
720 x 480	-	60
640 x 480	-	60
640 x 400	-	60
512 x 384	-	60
480 x 360	-	60
400 x 300	-	60

320 x 240	-	60
320 x 200	-	60

### Single-Link DVI Display Resolutions

This table lists the single-link DVI display resolutions for the follow Leadtek WinFast graphics cards.

- ✓ PX8600 GT (DDR2) Series
- ✓ PX8400 GS
- ✓ PX7600 GS Series
- ✓ PX7300 GT Series
- ✓ PX7300 GS Series
- ✓ PX7300 LE Series
- ✓ PX7200 GS Series

Resolution	Refresh Rate (Hz) - Analog Support	Refresh Rate (Hz) - Digital Support
2048 x 1536	75	-
1920 x 1440	85	-
1920 x 1200	85	60
1920 x 1080	85	60
1680 x 1050	60	60
1600 x 1200	100	60
1600 x 1024	100	60
1600 x 900	120	60
1440 x 900	-	60
1400 x 1050	-	60
1360 x 768	150	60
1280 x 1024	100	60
1280 x 960	120	60
1280 x 800	144	60
1280 x 768	150	60
1280 x 720	150	60
1152 x 864	140	60
1088 x 612	150	-
1024 x 768	150	60
848 x 480	-	60
800 x 600	150	60
720 x 576	-	60
720 x 480	-	60

640 x 480	-	60
640 x 400	-	60
512 x 384	-	60
480 x 360	-	60